

Product Selection Guide

Dino-Lite Digital Microscope

Resolution		Features				Part No.	Magnification (Working Distance)															
Resolution	Interface	FLC	eFLC*	AMR	EDOF/EDR*		DPQ*	AMI	APL	Optional Wi-Fi Streamer	Detachable Cable	10x - 220x (WD=59.5 - 11.3 mm)	20x - 220x (WD=60.2 - 11.9 mm)	10x - 140x (WD=234.5 - 30.5 mm)	10x - 50x (WD=102 - 14 mm)	10x - 70x (WD=59.5 - 108 mm)	400x - 470x (WD=308 - 35 mm)	415x - 470x (WD=307 - 15.9 mm)	500x - 550x (WD=58 - 32 mm)	700x - 900x (WD=64 - 5.9 mm)	45x - 70x (WD=146 - 108 mm)	70x - 140x (WD=38.6 - 35.1 mm)
Dino-Lite Edge^{HD}																						
8 MP	USB 2.0	•	•	•	•					•	AM8917M	ZT	ZTL	ZT4								T8
8 MP	USB 2.0	•	•	•	•					•	AM8517M	ZT	ZTL									T8A
8 MP	USB 2.0	•	•	•	•					•	AM8117M	ZT	ZTL									T4A
1.3 MP	USB 2.0	•	•	•	•					•	AM4917M	ZT	ZTL	ZT4								T8
1.3 MP	USB 2.0	•	•	•	•		•	•		•	AM4517M	ZT	ZTL	ZT4								T8A
1.3 MP	USB 2.0	•	•	•	•					•	AM4117M	ZT	ZTL	ZTW								TFP
Dino-Lite Edge 3.0																						
5 MP	USB 3.0	•	•	•	•					•	AM73915M	ZT	ZTL	ZT4								T8
5 MP	USB 3.0	•	•	•	•					•	AM73515M	ZT	ZTL	ZT4								T8A
5 MP	USB 3.0	•	•	•	•					•	AM73115M	ZT	ZTL	TF								
Dino-Lite Edge																						
5 MP	USB 2.0	•	•	•	•				WF-20	•	AF7915M	ZT	ZTL	ZT4								T8
5 MP	USB 2.0	•	•	•	•				WF-20	•	AF7515M	ZT	ZTL									T4A
5 MP	USB 2.0	•	•	•	•				WF-20	•	AF7115M	ZT	ZTL	ZTW	TF							T8A
1.3 MP	USB 2.0	•	•	•	•				WF-20	•	AF4915	ZT	ZTL									TFP
1.3 MP	USB 2.0	•	•	•	•				WF-20	•	AF4515	ZT	ZTL	ZT4								T1A
1.3 MP	USB 2.0	•	•	•	•				WF-20	•	AF4115	ZT	ZTL	ZTW	TF/ZTF							T2A
5 MP	USB 2.0	•	•	•	•				WF-10	•	AM7915M	ZT	ZTL									ZT2P
5 MP	USB 2.0	•	•	•	•				WF-10	•	AM7515M	ZT	ZTL									T1A
5 MP	USB 2.0	•	•	•	•				WF-10	•	AM7115M	ZT	ZTL	ZTW	TF							ZT2P
1.3 MP	USB 2.0	•	•	•	•				WF-10	•	AM4515	T/ZT	TL/ZTL									T2A
1.3 MP	USB 2.0	•	•	•	•				WF-10	•	AM4115	T/ZT	TL/ZTL	TW/ZTW	TF/ZTF							T2A
960H	TV										AM5212	T/ZT	TL/ZTL									T5
720p	D-Sub										AM5216	ZT	ZTL	TF/ZTF								T8
HD 720p	HDMI										AM5218	ZT	ZTL	ZTW	ZTF							
<div style="display: flex; justify-content: space-around; margin-top: 10px;"> 20x - 50x, 220x (WD=48.7 - 0 mm) 20x - 90x (WD=151 - 46.6 mm) 430x - 470x (WD=31.5 mm) 500x (WD=0.1 mm) </div>																						
Dino-Lite Premier																						
1.3 MP	USB 2.0								WF-10		AM4113	T/ZT	TL/ZTL	ZT4	T5							
0.3 MP	USB 2.0								WF-20		AF3113	T										
0.3 MP	USB 2.0								WF-10		AM3113	T										
Dino-Lite Basic																						
0.3 MP	USB 2.0								WF-10		AM2111	•										
* The feature is limited to use in DinoCapture.																						
Special Lighting Options																						
	UV		Infrared			Switchable																
	375 nm	395 nm	780 nm	850 nm	940 nm	375 nm + white	395 nm + white	375 nm + 940 nm	395 nm + 940 nm													
AM8117M	FU	FV	FK	FI	FJ	FUW	FVW	JU	JV													
AM4117M	FU	FV	FK	FI	FJ	FUW	FVW	JU	JV													
AF4515	FU	FV	FK	FI	FJ	FUW	FVW	JU	JV													
Fluorescence Options																						
	ex.	em.																				
		400 nm	435 nm	465 nm	465 nm + 580 nm	465 nm	520 nm	575 nm	620 nm													
AM8117M		CFW	BFCW	G2FBW	GRFBY	GFBW	YFGW	RFYW	DFRW													
AM4117M		CFW	BFCW	G2FBW	GRFBY	GFBW	YFGW	RFYW	DFRW													

* The feature is limited to use in DinoCapture.

Dino-Eye Eyepiece Camera

Product	Resolution	Interface	Eyepiece Port
AM7025X	5 MP	USB 2.0	23 mm / 30 mm / 30.5 mm / C-Mount
AM4025X	1.3 MP	USB 2.0	23 mm / 30 mm / 30.5 mm / C-Mount

Product information may be subject to change.

Dino-Lite

Digital Microscope

The Industry Standard



Dino-Lite Europe / IDCP B.V.
is the official main distributor and importer for:
Europe, the Middle East and Africa.

Dino-Lite

Digital Microscope

The Industry Standard

WWW.DINO-LITE.EU

Handheld Digital Microscope | Eyepiece Camera | Accessories



Manuscriptstraat 12-14 | 1321 NN Almere | The Netherlands
Tel: +31-20-6186322 | www.idcp.eu

The Dino-Lite Glossary

AXI - Axial Illumination

The AXI feature uses through-lens illumination to provide switchable coaxial lighting for examining reflective surfaces. It can be used to highlight or increase the contrast of patterns, defects, or surface features on a variety of materials, such as semiconductors, glass, and metal.



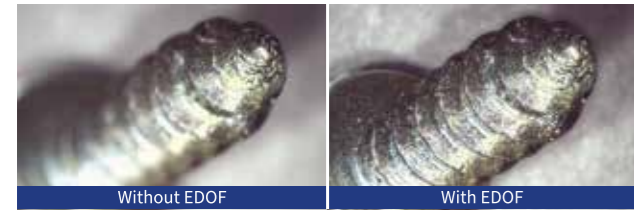
IC lead frame viewed at 210x magnification.

AMR - Automatic Magnification Reading

AMR is a feature that detects the current magnification of a Dino-Lite in use. The tracked magnification eliminates human error when reading and entering the magnification value, improving the efficiency and accuracy of measurements.

EDOF - Extended Depth of Field

EDOF creates images with a wider depth of field by stacking multiple images at different focal depths with one click. This results in a clear view of objects with topography changes in height.



Screw captured at 35x magnification.

FLC - Flexible LED Control

Shadows can be useful in microscopy when they are used to reveal surface features such as depth and height variations in a sample. FLC provides on/off switching capability of each quadrant and 6-level intensity adjustability of activated quadrants, enabling the creation of shadows by uneven lighting. It can be useful for highlighting surface features and topographical variations or enhancing contrast without using auxiliary side lighting.



Metamorphic rock viewed at 60x magnification.

Polarizer

Polarizing Dino-Lite microscopes have two linear polarizers: one in front of the LEDs that can rotate and another in the optical pathway to the sensor. On its own, it can be used as reflective polarizing light microscopy to suppress glare for better contrast or perform subsurface examinations. Used with a polarizer backlight, such as the BL-ZW2, it can be used as transmitted polarizing microscopy for thin film or petrography examinations.

APL - Aim Point Laser

APL is a through-lens laser that casts a red dot visible on the sample and live image. This helps to position a point of interest under the microscope's field of view. The Dino-Lite equipped with APL is classified as a Class 1 laser product that is non-hazardous for normal use.



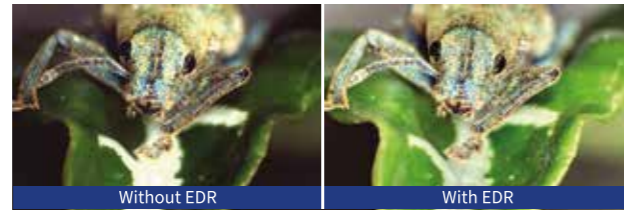
APL projecting on metamorphic rock.

DPQ - Depth Acquisition

DPQ is a feature that leverages the microscope's small depth of field to extract depth or height by comparing the focus of a position with a reference. It provides an indirect yet effective way of obtaining depth information from surfaces that exhibit topographical variations.

EDR - Extended Dynamic Range

EDR is a feature that creates images with a wider dynamic range by stacking multiple images at different exposure levels with one click. This allows details to be more visible in areas that may have been too bright or too dark in a single exposure.



Phyllobius calcaratus captured at 30x magnification.

eFLC - enhanced Flexible LED Control

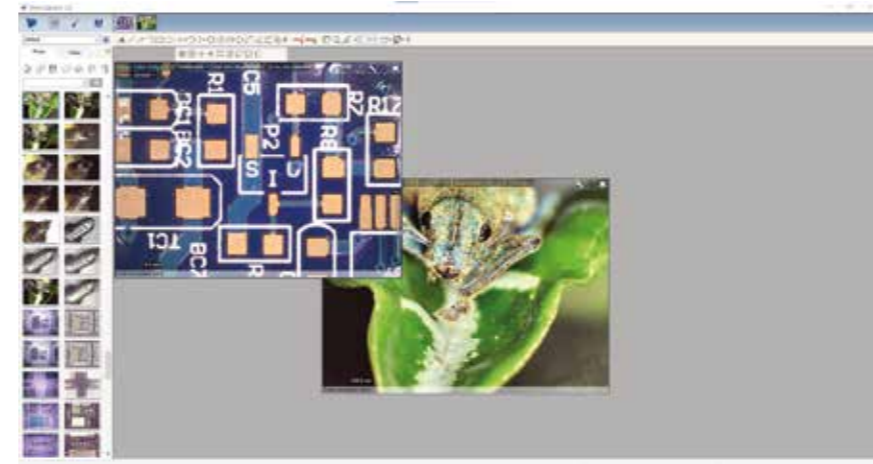
The eFLC added 32 levels of intensity adjustability to both the bright and dark quadrants of FLC. This allows to fill light in the shadows to avoid clipping and achieve better detail in photos.

Software

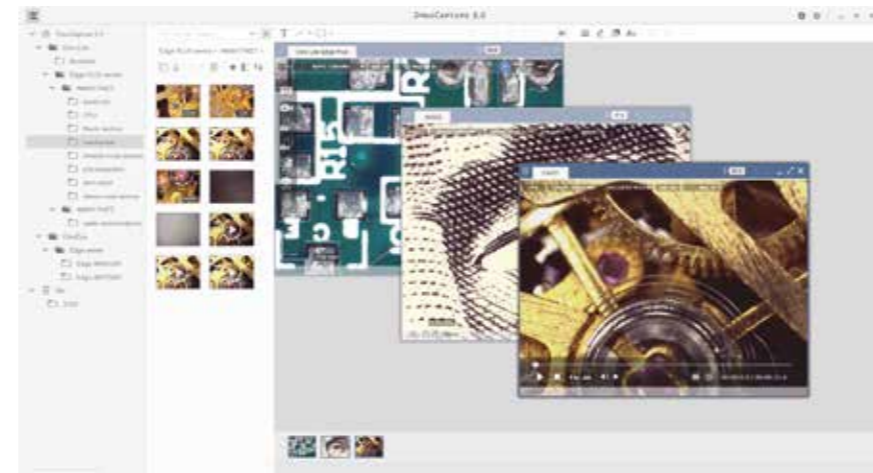
Dino-Lite and Dino-Eye devices require software for controlling various functions, including illumination and camera settings. Softwares are available with Windows or MacOS. Additionally, there are dedicated apps for Android and iOS mobile devices, which allow users to stream images through a Wi-Fi steamer for convenient on-the-go usage.

DinoCapture for Windows

DinoCapture is a Windows imaging software for USB Dino-Lite microscopes used in many applications, from industrial to educational to research. It allows users to preview multiple cameras, adjust the camera and LED settings, capture images and videos, add text and drawings, perform measurements, and other special functions.



DinoCapture 2.0



Upcoming DinoCapture 3.0

DinoXcope for macOS

DinoXcope is a functional software for using Dino-Lite on macOS. With features like image and video capture, editing tools, measurements, and more, DinoXcope provides users the essentials for live imaging and documentation.

SDK

The software development kit (SDK) allows the integration of Dino-Lites into the customer's own system. The package provides controlling capabilities for the camera and LEDs of Dino-Lites. SDK is compatible with Windows in 32-bit OS or 64-bit OS versions. Contact your local distributor for more information.

DinoConnect for iOS & Android

DinoConnect is an imaging app designed to be used with a Dino-Lite connected via a dedicated Wi-Fi steamer for fieldwork and outdoor applications. This app allows users to preview live images, control illumination and exposure, take photos, record videos, add texts, and perform measurements on a mobile device.



DinoConnect 2

Accessories

Wi-Fi Streamer

WF-20



Modular Wi-Fi steamer compatible with Dino-Lite AF series

WF-10



Wi-Fi steamer compatible with a wide selection of Dino-Lites

Rack

RK-10



General-purpose tabletop rack

RK-02



Gooseneck rack

MS-W1



Handy wheeled stand

RK-06 / RK-06F*



Agile tabletop rack
* Fine-focus adjustment option

RK-05 / RK-05F*



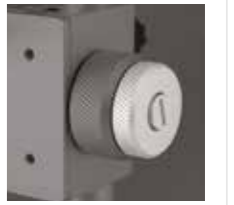
Tilttable rack
* Fine-focus adjustment option

RK-04 / RK-04F*



Compact rack
* Fine-focus adjustment option

Fine-focus adjustment knob on RK-04F, RK-05F, and RK-06F



Extension for RK-10 or RK-06

RK-10-PX2
XY positioning arm

RK-10-FX
Flexible arm extension

SS-M2
Petri dish holder

Holder

HD-M2A / HD-M2B



Metal holder with quick release screw
Vertical/horizontal mounting hole size: 10mm(A) or 1/2"(B)

Front Cap

N3C-R



Ring light cap

N3C-A



Coaxial light cap

Backlight

BL-ZW2



Backlight with adjustable and removable polarizer

BL-CDW



Backlight with bright field and dark field illumination

Others

KM-01



Knob motor for adjusting the focus knob remotely

SW-F1



Foot pedal for triggering camera operations on software (DinoCapture)